

16 Series Taper Nose In-Line Panel Receptacles
 Rated: 600V, up to 400A continuous current using 4/0 cable with 90° C insulation

18 Series Ball Nose In-Line Panel Receptacles
 Rated: 600V, up to 400A continuous current using 4/0 cable with 90° C insulation

LEVITON

FEATURES

English

- Interchangeable and compatible with competitive same nose cam-type products** - can be retrofitted to existing locations and power distribution systems.
- Shatter and crack proof** - high durometer thermoplastic elastomer (TPE) sleeve.
- Color coded insulating sleeves** - fast and easy phase identification.
- Self-compensating for wear** - slit and cam in male contact provide spring action for longer usage.
- Fast connect/disconnect** - twist and pull provided by double cam male and guide boss in female.
- High conductivity** - positive, vibration proof connection provided by double cam design.
- Wide variety of applications** - usable with a wide range of cable sizes and amperage ratings.
- The 16 and 18 Series meet NEC Code, are UL listed and CSA Certified.**
- The 16 Series is rainproof - NEMA Type 3R enclosure rating for outdoor use.**

ITEMS AND TOOLS NEEDED FOR ASSEMBLY

- (1) Razor Cutting Blade
- (1) Allen Wrench
- (1 or 2) Copper Shim(s)*†
- (1) Pliers
- (1) Wire Cutter
- (2) Hex Head Socket Set Screw(s)*†
- (1) Strain Relief Wire*†

* Provided
 † Depending on model

INSTALLATION INSTRUCTIONS

- WARNING:** TO BE INSTALLED AND/OR USED IN ACCORDANCE WITH ELECTRICAL CODES AND REGULATIONS.
- WARNING:** IF YOU ARE NOT SURE ABOUT ANY PART OF THESE INSTRUCTIONS, CONSULT AN ELECTRICIAN.
- WARNING:** USE "CU" CABLE ONLY. DO NOT EXCEED RATED CABLE AMPACITY FOR CORRESPONDING CABLE SIZE. ACCEPTABLE CORD TYPES INCLUDE; SC, SCE, SCT, OR TYPE "W".
- CAUTION:** FEMALE CONTACTS FOR TAPER NOSE AND BALL NOSE DEVICES ARE **NOT** INTERCHANGABLE. TAPER NOSE ASSEMBLIES WILL **NOT** MATE PROPERLY WITH BALL NOSE ASSEMBLIES.
- NOTE:** USE AMPACITY CHART FOR CORRECT CABLE SIZE APPLICATION.

TO WIRE DOUBLE SET SCREW VERSIONS:

- WARNING:** TO AVOID FIRE, SHOCK OR DEATH, **TURN OFF POWER** AT CIRCUIT BREAKER OR FUSE AND TEST THAT THE POWER IS OFF BEFORE WIRING!
- Strip approx. 1-7/16" of the jacket off the cable end (refer to Figures 1A). Wrap 1 or 2 copper shims around the exposed wire depending on your cable size.
NOTE: Wrap the center of the strain relief wire around the cable jacket between 3/8" and 1/2" from the end of the jacket and tighten by twisting with pliers.
- Bend the wire so that it rests flat against the shim making sure to squeeze the twisted portion tightly against the cable jacket to ensure that it will clear the locking ring inside the insulator.
- Cut the ends of the strain relief wire flush with the front end of the shim. Once secured, the strain relief wire will prevent the cable jacket from pulling away from the connector.
- Insert the exposed cable all the way into the contact with the strain relief wire opposite the hex socket set screw holes. Using an Allen wrench, **tighten the 1/2-20 set screws to 120 in.-lbs. of torque**, ensuring that they are firmly secure.

TO MOUNT PANEL RECEPTACLES:

- Prepare panel per Cutout Drawing provided below.
- Attach receptacle to panel using four (4) #10-24 fasteners with nuts and lock washers (not provided).

TO WIRE THREADED STUD VERSIONS:

- Determine correct size cable using Allowable Device Ampacity Chart. Determine correct lug based on cable size (not provided).
- Prepare cable end and insert and crimp cable into lug per manufacturer's requirements.
- Attach lug to threaded stud using 1/2" flat washer and 1/2-13 UNC hex nut (not provided). Tighten nut to 49 ft.lbs.

Figure 1 / Figura 1
16/18 Series Male and Female - Set Screw 1/0 to 4/0
 Connecteurs mâles et femelles à visser (série 16)
 Macho y Hembra Serie 16 - Tornillo

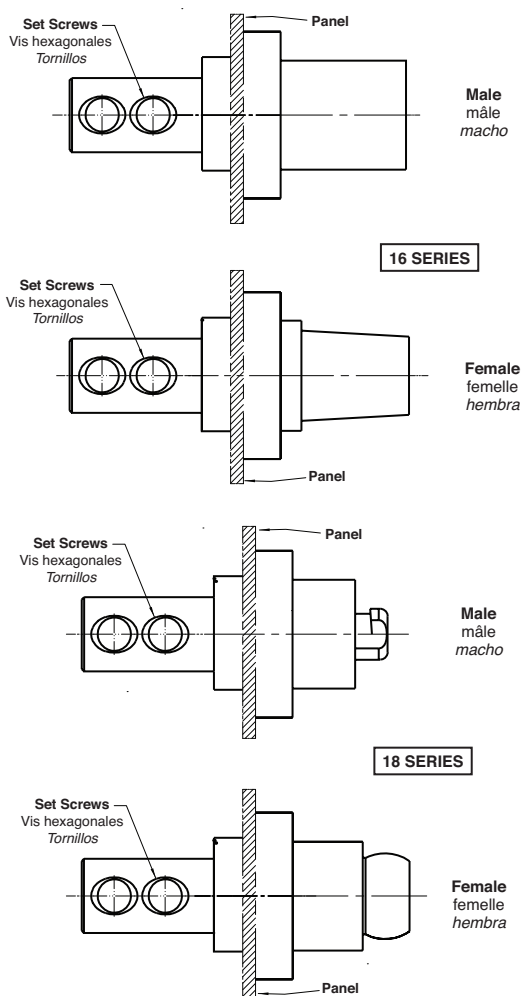
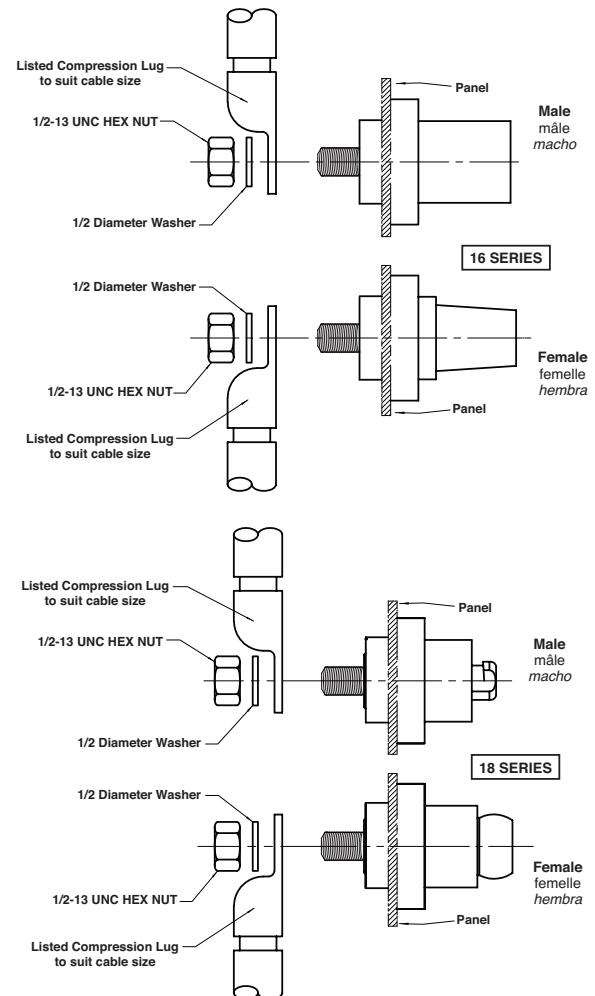


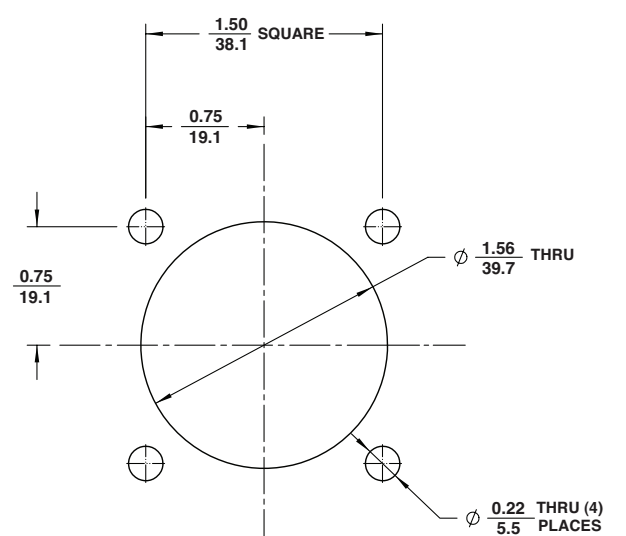
Figure 2 / Figura 2
16/18 Series Male and Female - Threaded Stud #2 to 4/0
 Connecteurs mâles et femelles à sertir (série 18)
 Macho y Hembra Serie 18 - Plegable



Allowable Device Ampacity Chart
 Tableau des courants admissibles
 Cuadro de amperaje permitido para el producto

| Cable Size AWG Calibre de Câble (AWG) Tamaño del Câble (AWG) | 75° C. Cable Isolant résistant à Câble 75° C. Cable de 75° C. | 90° C. Cable Isolant résistant à Câble 90° C. Cable de 90° C. |
|--|---|---|
| #2 | 170 | 190 |
| #1 | 195 | 220 |
| 1/0 | 230 | 260 |
| 2/0 | 265 | 300 |
| 3/0 | 310 | 350 |
| 4/0 | 360 | 400 |

Cutout Drawing
 French
 Spanish



- NOTE:** In open air, based on ambient temperature of 30° C. (86° F.)
- REMARQUE :** à l'air libre et à une température ambiante 30° C (86° F)
- NOTA:** Al aire libre, basado en temperatura de ambiente de 30° C (86° F)

ARTWORK PRINT SPECIFICATIONS



PART NUMBER PK-93680-10-02-0A-X0 **REV** _____ **DESCRIPTION** Instruction sheet

SPECIFICATIONS :

| | | |
|-------------------------------------|--|-----------------|
| Dimensions: <u>11" x 17"</u> | * Color(s): <u>1</u> over <u>1</u> | * Fonts: |
| * Thickness: <u>40 lb.</u> | 1: <u>Black</u> <input checked="" type="checkbox"/> Spot | 1: _____ |
| * Material: _____ | 2: _____ <input type="checkbox"/> CMYK | 2: _____ |
| * Finish: _____ | 3: _____ | 3: _____ |
| _____ : | 4: _____ | 4: _____ |

*** For manuals - designates cover specifications**

Die Line Key: - . . - Perforate
———— Die Cut - - - - Fold Line - - - - Kiss Cut ::::: Cellophane ≡≡≡≡ Glue

MANUAL INTERIORS / BINDERY / FOLD SCHEME :

| | | |
|--|--|---------------|
| Body Material: _____ | Color(s): _____ over _____ | Fonts: |
| Thickness: _____ | 1: _____ <input type="checkbox"/> Spot | 1: _____ |
| Bindery | 2: _____ <input type="checkbox"/> CMYK | 2: _____ |
| <input type="checkbox"/> Die cut <input checked="" type="checkbox"/> Fold <input type="checkbox"/> Saddle Stitch | 3: _____ | 3: _____ |
| <input type="checkbox"/> Perfect Bind <input type="checkbox"/> Drill <input type="checkbox"/> Trim | 4: _____ | 4: _____ |

PROCESS :

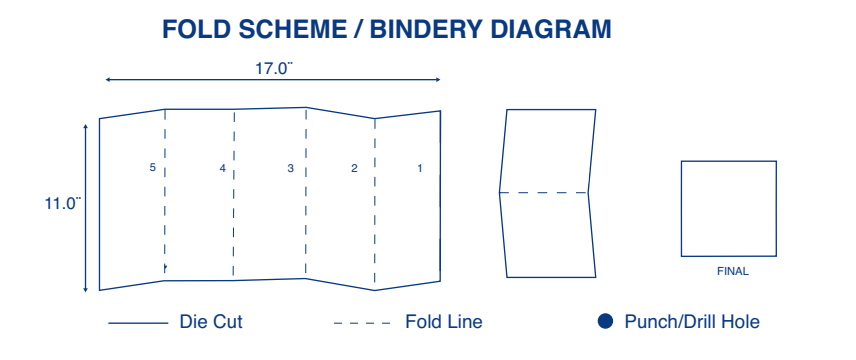
Offset Flexo

Other _____

Line Screen: _____

Angle: _____

Resolution: _____



COMMENTS :

The information in this document is the exclusive PROPRIETARY property of LEVITON MANUFACTURING COMPANY, INC. It is disclosed with the understanding that acceptance or review by the recipient constitutes an undertaking by the recipient. (1) to hold this information in strict confidence, and (2) not to disclose, duplicate, copy, modify or use the information for any purpose other than that for which disclosed.

© 2010 Leviton Mfg. Co., Inc. Unpublished, All Rights Reserved

FOR LEVITON USE ONLY

| | | |
|--|--|--|
| Approvals: <input type="checkbox"/> Plant <u>82</u> <u>A. Hubbard</u> | <input type="checkbox"/> CQA <u>J. Rhinestine</u> | <input type="checkbox"/> PM <u>J. Eder</u> |
| <input type="checkbox"/> Mktg _____ | <input type="checkbox"/> Eng <u>S. Zacharevitz</u> | <input type="checkbox"/> S & A _____ |
| <input type="checkbox"/> Cust _____ | <input type="checkbox"/> Other _____ | <input type="checkbox"/> Other <u>V. LoNigro</u> |

PN-ARN: 095662-C001875 **ECO Number:** 9095662 **Pilot Rev:** _____

Artist: H. Sanchez **Artwork Release Date:** _____

Notes: _____